

PACC TECHNICAL SPECIFICATIONS

Issue date: September 2024

Performance Arts Culture Cessnock (PACC)

198 Vincent Street, Cessnock, New South Wales, 2325

Email: pacc@cessnock.nsw.gov.au

Phone: 02 4993 4266

Technical Manager: Andrew Bondfield

Email: andrew.bondfield@cessnock.nsw.gov.au

pacc.technical@cessnock.nsw.gov.au

Phone: 02 4993 4211

Mobile: 0401 107 469

Theatre & Events Technician: Jarrod Behringer

Email: jarrod.behringer@cessnock.nsw.gov.au

pacc.technical@cessnock.nsw.gov.au

Mobile: 0439 620 749

Technical Officer: Joshua Anderson

Email: joshua.anderson@cessnock.nsw.gov.au

pacc.technical@cessnock.nsw.gov.au

Mobile: 0478 822 273

Please note (!!) Denotes extra charges.

CONTENTS

PACC TECHNICAL SPECIFICATIONS	1
CONTENTS	2
SITE MAP	4
SEATING PLAN / CAPACITY	5
STAGE PLAN	6
STAGE	7
STAGE DIMENSIONS	7
ORCHESTRA PIT	8
LOADING DOCK.....	8
OBSTRUCTIONS / RESTRICTIONS	8
RIGGING	10
ONSTAGE SOFT-GOODS (DRAPES)	12
HEIGHTS ACCESS EQUIPMENT	12
POWER / DIMMERS	13
LIGHTING	14
LANTERN STOCK.....	14
HOUSE LIGHTS	15
STANDARD RIG	16
AUDIO	17
CONSOLES / EQUIPMENT	17
SPEAKERS.....	17
MULTICORE AND PATCHING	17
OTHER AUDIO EQUIPMENT	17
TALKBACK COMMS.....	18
PIANOS	19
STAGE MANAGER / DRESSING ROOMS / MISCELLANEOUS	19
PERFORMER'S FACILITIES	19
CONFERENCE AND MEETING ROOM FACILITIES	20
AUDIO VISUAL	21
DISCLAIMER	21

INTRODUCTION

Welcome to Performance Arts Culture Cessnock (PACC).

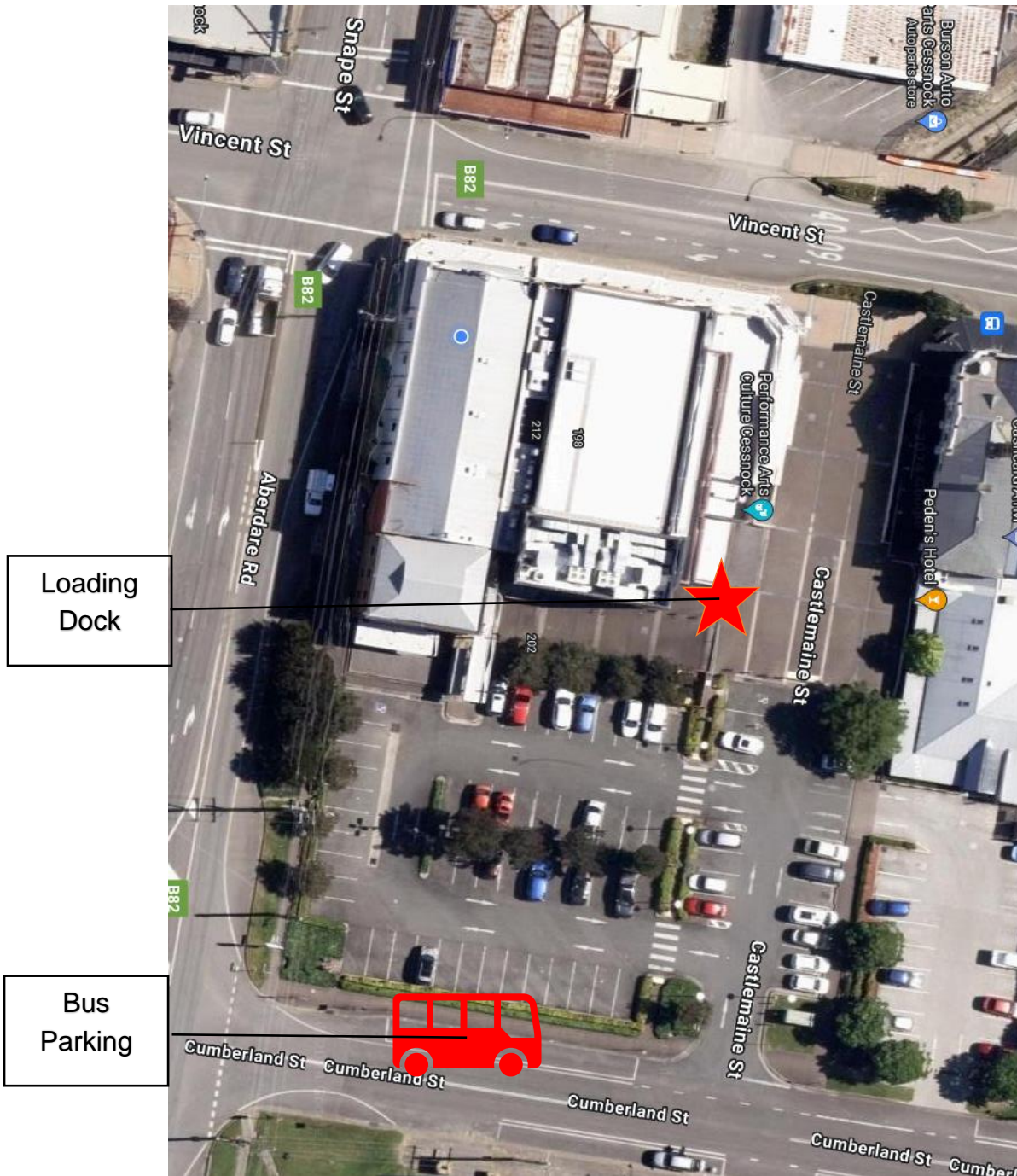
Owned and operated by Cessnock City Council, PACC presents a variety of theatre, music, comedy and dance productions each year. The complex comprises of a 466-seat theatre, with a spacious foyer, bar and kitchen; a gallery exhibition space and artists workspace; and two large rooms suited to a variety of uses, PACC is the premiere arts destination in the Hunter Valley.

PACC technicians will endeavour to always meet hirers' requirements. To assist us with this, please supply as much information as possible about your project, schedules, and production requirements to ensure your event is as successful as possible. The earlier your requirements are provided to us the easier it will be for the technicians to cater for you needs and clarify any matters with you.

Every event must be managed so that it is successfully integrated with other PACC activities to ensure the safety and security of workers and the general public. Considerations must also be made in the protection of PACC siter and heritage values.

Please note, this guide is subject to change.

SITE MAP



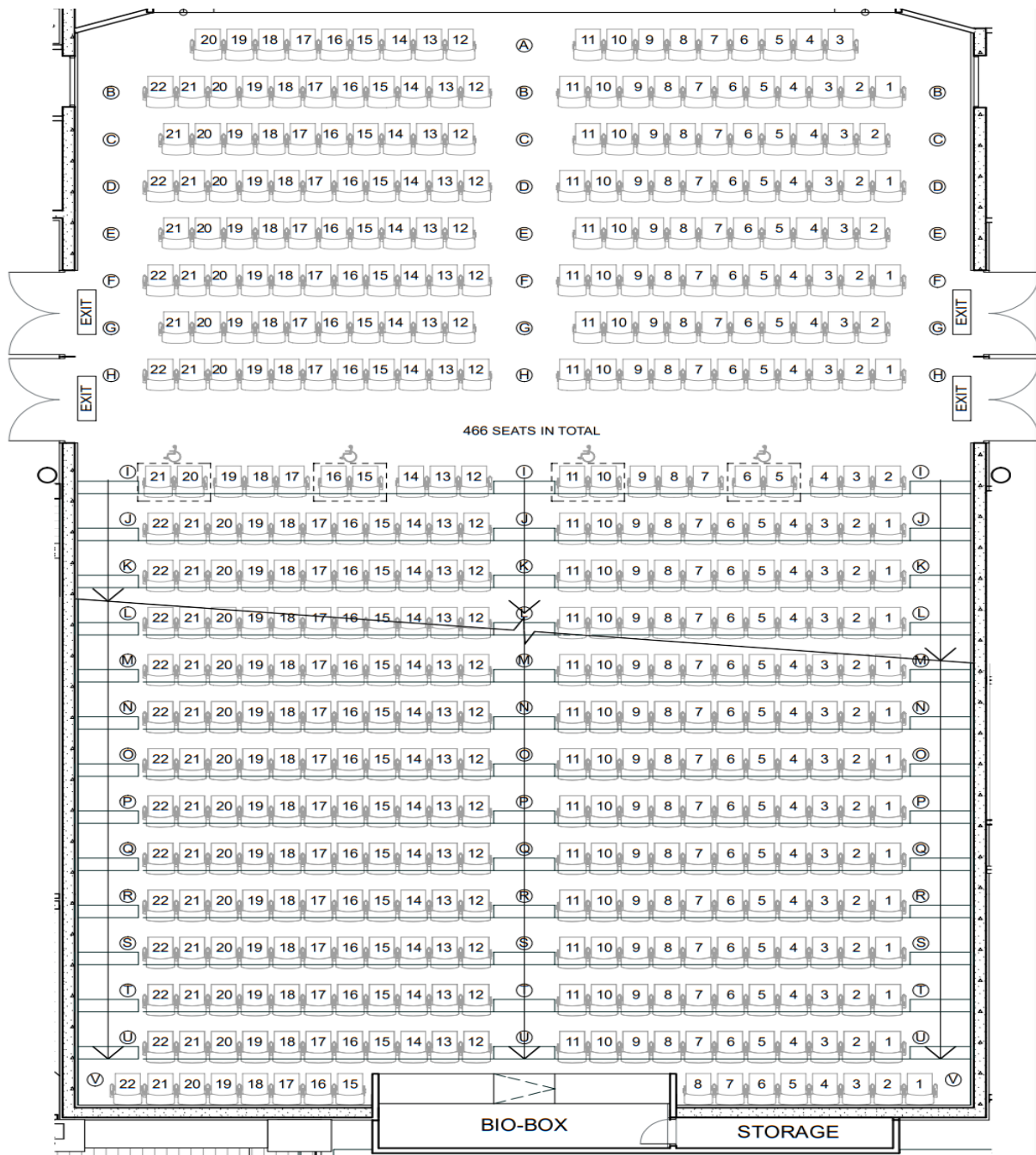
SEATING PLAN / CAPACITY

Includes touring production desk positions at rear of auditorium.

Maximum seating capacity – up to 466.

Rows J – V only accessible via stairs.

STAGE



STAGE

- PACC is a non-fly tower venue with an unraked stage.
- The stage surface is sprung and is finished with flat black tempered Masonite.
- The venue does not have a Safety Curtain (Fire Curtain).
- Stairs on either side of the Thrust provide access from the stage to the auditorium.
- A wheelchair lift is located Prompt Side (Stage Left) (PS).

Please note PACC does not operate a scenery workshop or provide storage for sets.

STAGE DIMENSIONS

Proscenium Arch

Height:	5,000mm
Width:	7,900mm

Setting Line (Upstage edge of Main Stage Curtain from Proscenium (Plaster Line))

610mm

Stage area upstage of Setting Line

Width downstage (wall-to-wall):	19,000mm
Width upstage (wall-to-wall):	17,000mm
Setting Line to back wall:	7,000mm
Setting Line to Cyc:	6,090mm
Setting Line to Line 1 (border):	-335mm

Stage area downstage of Setting Line

Apron width (wall-to-wall):	12,100mm
Thrust width (stairs-to-stairs):	10,300mm
Proscenium to downstage edge of Apron:	1,425mm
Proscenium to downstage edge of Thrust:	3,455mm

Stage – Auditorium access

Stairs width with 50mm handrail:	800mm
Stairs width without 50mm handrail:	900mm

!! Stairs in-fills are available for both sides and can be installed upon request.!!

Stage Heights

Stage to underside of roof trusses:	7,350mm
Stage to auditorium floor:	-1,100mm

Stage Surface

- The stage surface is sprung and is finished with flat black tempered Masonite.
- | | |
|-------------------------------|-------------------------------|
| Distributed loading: | 509kg/m ² (5.0kPa) |
| Concentrated (point) loading: | 367kg/m ² (3.6kPa) |

ORCHESTRA PIT

- Access from Opposite Prompt (Stage Right) (OP).

Width:	9,900mm
Depth:	3,050mm
Stage to pit floor:	-2,200mm

!! The orchestra pit is covered with fixed floor sections that require removal when the pit is in use.**!!**

LOADING DOCK

- Located off PACC car park (entry from Cumberland Street).
- The loading dock consists of a hydraulic elevated work platform and adjustable ramp system.
- Due to the height of the loading dock, small trucks and vans (under 3T) will require loading in two movements – from truck to lift, and lift to stage.
- ***NOTE*** The loading dock floor is a floating concrete slab suspended over a running creek and therefore has a maximum load limit of 10T. Please advise PACC in advance if your truckload exceeds limit.**

Height from street:	1,600mm
Opening height:	3,000mm
Opening width:	2,300mm

OBSTRUCTIONS / RESTRICTIONS

- Two panorama fixed truss are dead hung in both wings at 4,470mm from stage.
- Air conditioning vents are installed PS at 4,730mm from stage.

STAGING ACCESSORIES EQUIPMENT

Rostrums (Risers)

Rostrums:	7x 2,000mm (L) x 1,000mm (W) x 300mm (H) with 15mm Duraflex tops (Can be adjusted to 600mm (H))
Treads (Steps):	2x 600mm (L) x 300mm (W) x 200mm (H) single step 2x 900mm (L) x 710mm (W) x 300mm (H) two steps 2x 900mm (L) x 710mm (W) x 450mm (H) three steps
Assorted:	Drum Carpets Carpet Runners Black material (Tat) Shot Bags mobile clothes racks Full length mirrors and assorted make-up mirrors

RIGGING

- The over stage rig consists of dead hung masking using rated hardware, chain, and beam clamps, and four flat trusses on motorised pile hoists.
- Stage lighting positions consist of four 400mm flat truss on motorised pile hoists.
- Front of house (FOH) lighting positions consist of two 400mm box truss on four chain motors.
- Battens and fixed scenery cannot be swung.
- All rigging must be approved by venue management staff prior to the bump-in (load in) of the event.
- All rigging movements are controlled by the duty venue technician.

Stage

Batten type:	Global Truss F32 Aluminium flat truss
Batten length:	10,000mm
Batten extensions:	none
Batten pick up points (5x):	centre, 2,500mm, 5,000mm
Batten concentrated (point) load:	35kg
Batten working load limit:	30kg/m
Hoist working load limit:	300kg

Front of House

Batten type:	Prolyte H40 Aluminium box truss
Batten length:	12,000mm
Batten extensions:	none
Batten pick up points (2x):	4,980mm
Batten concentrated (point) load:	55kg
Batten working load limit:	119kg/m
Hoist working load limit:	500kg

Hanging Plot Standard Rig

SL = setting line, *CL* = centre line

Line Type: D = dead hung, *MW* = motor winch

Lineset No.	Distance from SL	Line Type	Working Load Limit	Trim above stage	Venue Allocation	Notes
1	-320mm	D		4,800mm	Border	
2	-220mm	D		6,000mm	Legs	3,950mm from CL
3	0mm	D		5,500mm	House Tabs	Traveller
4	560mm	MW	300kg	5,500mm	LX 1	
5	890mm	D		4,800mm	Border	
6	990mm	D		6,000mm	Legs	3,900mm from CL
7	1,390mm	MW	300kg	5,500mm	LX 2	
8	2,190mm	D		4,800mm	Border	
9	2,290mm	D		6,000mm	Legs	3,900mm from CL
10	2,490mm	D		6,300mm	MS Curtain	Traveller
11	2,790mm	MW	300kg	5,550mm	LX 3	
12	3,490mm	D		4,800mm	Border	
13	3,590mm	D		6,000mm	Legs	3,900mm from CL
14	3,790mm	MW	300kg	6,000mm	LX 4	
15	5,490mm	D		6,300mm	US Curtain	Traveller
16	6,090mm	D		6,300mm	Cyclorama	

POWER / DIMMERS

PACC is fitted with a hardwired Bytecraft Solution¹² Dimmer / Power distribution system, all with Bypass Switching and RCD safety protection. Please contact the technical department for the most current patch allocation.

Power Supply Front of House

Stage lighting dimmers	3x 32 Amp 3-Phase 5-pin Wilco outlet
House Light dimmers	1x 32 Amp 3-Phase 5-pin Wilco outlet
Chain Motor power	1x 32 Amp 3-Phase 5-pin Wilco outlet
Additional power	2x 32 Amp 3-Phase 5-pin Wilco outlet

Power Supply Stage

Stage dimmers	8x 32 Amp 3-Phase 5-pin Wilco outlet
---------------	--------------------------------------

Road Power hook up

Outdoor Stage	1x 32 Amp 3-Phase 5-pin Wilco outlet
	1x 40 Amp 3-Phase 5-pin Wilco outlet

Front of House Dimmers

2.4Kw dimmers	36x 2.5 Amp, 2x socket per circuit
---------------	------------------------------------

Onstage Dimmers

2.4Kw dimmers	96x 2.5 Amp, 2x socket per circuit
---------------	------------------------------------

LIGHTING

PACC has a standard lighting inventory which includes an ETC Ion primary console and backup. PACC is able to hire additional fixtures / equipment for an event, or you are welcome to supply your technicians, lighting console and fixtures. If a hirer wishes to supply their own lighting equipment for their event, they must also bring in their own technician to set up, patch and troubleshoot / operate their equipment whether the venue's lighting console is used or an additional console is brought onsite.

Please refer to the lighting plot for the standard positions. If the standard lighting rig is reconfigured an additional fee to restore and refocus the rig to the standard configuration will apply.

PACC employs a Pathport network system facilitating distribution of multiple universes to a variety of locations around the stage and auditorium.

Lighting Control Desk ETC Ion Xe (Eos family) with 2 x 20 fader wing (6,144 outputs / 12x DMX universes)

LANTERN STOCK

- 5 x Infinity TCYC-7 LED
- 9 x Claypaky Mini-B
- 12x Event PixBar12H Battens
- 28 x Event 12x12 Hex ProPars
- 18 x Prolights EclProfile CT+ 15-30°
- 8 x Martin MAC Encore Performance WRM
- 10 x Chauvet DJ Corepar Q60
- 18 x ProPar Par64
- 29 x Selecon "Pacific" 14-35° 1000w Profiles
- 26 x Selecon "Rama" 1000w Fresnels

Hazer

- 1x Look Solutions Unique 2.1 haze machine

Gobos 15x Selecon "Pacific" Profiles take "B" size holders

10x Prolights EclProfile CT+ gobo holders

Irises: 4x Selecon "Pacific" Profiles

10x Prolights EclProfile

Follow Spot **!!Robert Juliat OZ 600w LED!!**

Note All lamps complete with 150kg fast coupler / globe / frames / barn doors / shutters.

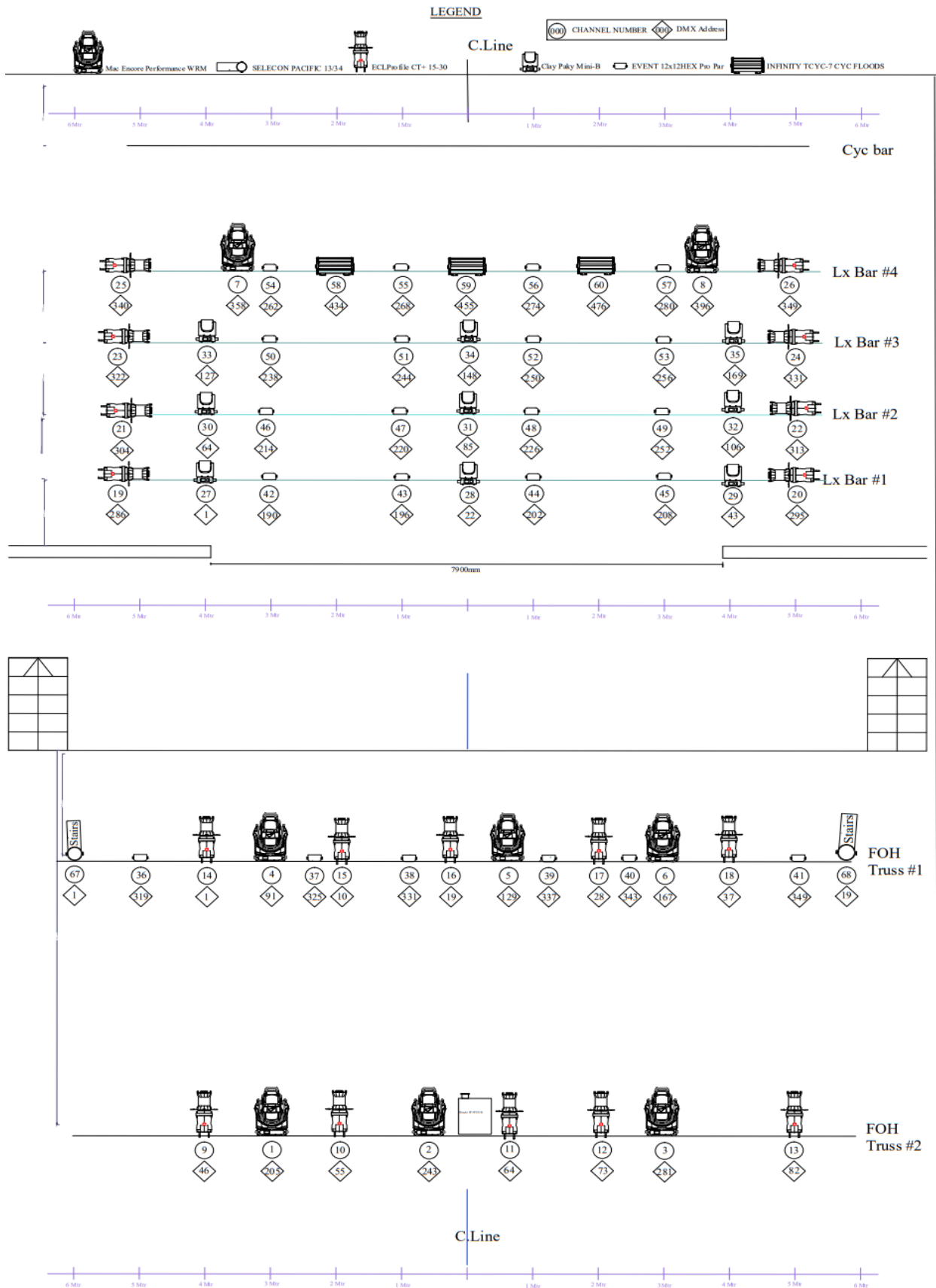
Extra equipment or cabling brought into PACC must be tested, tagged and current. PACC can test and tag at cost to the hirer.

HOUSE LIGHTS

House lighting is independent from the stage lighting system. It consists of 18x BL 100-WW-II-D50 Tungsten LED Pars controlled by a Cueserver 2 Mini processor and DMX fade engine system. It is possible to set up house lights control via the lighting desk upon request.

- House lights pre-sets**
- 'Mystique' wall stations
 - 4 Programable, 4 pre-set panel at Prompt corner
 - 4 Programable, 4 pre-set panel at Bio Box

STANDARD RIG



AUDIO

CONSOLES / EQUIPMENT

Bio Box Mixing Equipment

1x Allen & Heath GLD-80 (32 in / 16 out) digital mixing console

System Processor

1x Meyer Sound Galileo

SPEAKERS

Front of House

2x Meyer CQ 1 (P / OP Prosc. Arch)

2x Meyer UPJ1-1P (P / OP Prosc. Arch)

On stage flown fold back

2x Proel "Flash 12A" active speakers @ 200w

MULTICORE AND PATCHING

Digital Patch

Terminated at both Prompt and Off-Prompt

1x GLD AR2412 (DSR/Off-Prompt)

1x GLD AR84 (DSL/Prompt)

Analogue Patch

Terminated at Off-Prompt

32x XLR microphone lines to Bio Box

4x XLR returns from Bio Box

8x XLR tie-lines from Orchestra Pit

4x XLR tie-lines downstage Prompt

4x XLR tie lines downstage OP

OTHER AUDIO EQUIPMENT

Microphones

3x Shure BETA 58A

7x Shure SM58

3x Shure SM57

2x Crown PCC-160 floor boundary mics

3x Superlux PRA 52B choir mics

2x Sennheiser e906

!!2x DPA 4066 headset!!

!!1x Heil HDK-7 drum mic kit!!

(consisting of 2x PR22, 3x PR28, 2x PR30B, 1x Shure BEAT 52A kick drum mic)

Radio Microphones

!!4x Sennheiser EW100 G3 receivers + EW945 hand-helds!!

4x Sennheiser SK100 body packs + ME3 headset

Lectern Microphones

3x Earthworks MSR500/600 condenser mics

Microphone Stands

13x Beyer-dynamic GST400 boom (tripod base)

2x round base upright (black stem)

3x round base upright (chrome stem)

1x short boom (tripod base)

3x short boom (round base)

DI Boxes

4x L.A. Audio DI-2 mark #3

3x DB-01 passive

3x Radial JDI passive

1x Radial JDI Duplex passive stereo

Foldback Wedges

2x JBL EON10G2

3x Meyer UPJ-1P

5x Quest QM450a active wedge

1x Quest QM600ASi active sub

Miscellaneous

4x Hercules Symphony stand

1x dbx 2231 dual 1/3 Octave EQ with limit

1x Lexicon MPX1 – 2-in/2-out multi-effects processor

TALKBACK COMMS

Wired Talkback Systems

1x Ezicom 200 Master Station (in bio box)

5x Ezicom 100 belt-packs

6x Beyer-Dynamic DT-109 headsets

Patches in bio box, prompt and off-prompt wings

Wireless Talkback Systems

1x BTR-80N-B2 UHF 2 ch. wireless base station

4x TR-80N-B2 UHF 2 ch. wireless transceivers

4x HR single-sided headsets

PIANOS

On stage Bechstein model E Concert Grand

Foyer / Auditorium Petrof baby grand

Pianos are tuned to A440 concert pitch unless otherwise specified.

!!There are additional charges for piano tuning!!

STAGE MANAGER / DRESSING ROOMS / MISCELLANEOUS

Stage Manager Console Prompt Corner (positioned in SL wing)
 Talkback out-station. Extension leads (on request)
 Flatscreen stage monitors (Stage Relay)
 Dressing Room / Auditorium / Foyer paging
 House Lights control wall panel

PERFORMER'S FACILITIES

Dressing Room #1 Seats approximately 8 – 10 persons
 Mirrors / counter / sink / costume racks
 Program sound / paging / CCTV stage monitor
 Toilets / shower

Dressing Room #2 Seats approximately 8 – 10 persons
 Mirrors / counter / sink / costume racks
 Program sound / paging / CCTV stage monitor
 Toilets / shower

Accessible Toilet Male / Female toilet adjacent to Dressing Rooms

Green Room / Kitchenette Adjacent to Dressing Rooms
 Small coffee / tea making facility
 Refrigerator / sink / microwave
 Program sound / paging / CCTV stage monitor

Laundry Facilities 1x Whirlpool 8.5kg front-end load washing machine
 1x Westinghouse dryer
 1x ironing board

1x iron

CONFERENCE AND MEETING ROOM FACILITIES

Seniors Room (ground floor) 9m x 11m

Adjacent to Dressing Rooms

Has own small kitchen with refrigerator / sink / microwave

Program Room (first floor) 9m x 11m

Above Seniors Room, large open space suitable for rehearsals and conferences

Adjacent to Male & Female toilets

Small adjacent coffee / tea making kitchen facility

!!Fitted with 1x Hitachi CP-WU5500, DLP5200 lumens projector!!

3000mm x 3000mm projection screen

Small PA system for audio feed from laptop

Makers Space (first floor) 7m x 5m

Adjacent to Program Room

Adjacent to Male & Female toilets

Small adjacent coffee / tea making kitchen facility

!!Projectors or screens available for this room!!

Portable 1800mm x 1800mm projection screen

AUDIO VISUAL

Data Projectors:

!!1x Panasonic PT-LB80, LCD 3200ansi!!

!!1x Hitachi CP-WU13K, DLP 13000ansi!!

(Permanent fixture on FOH #2 truss)

Projection Screens:

1x Draper Diplomat tripod screen

175cm x 234cm (6' x 7')

!!1x Draper Universal folding screen!!

274cm x 366cm (12' x 9')

!!1x HP Elite laptop PC!!

AV Accessories:

1x Catlink VGA to Cat-5 converter kit

1x Catlink HDMI to Cat-5 converter kit

1x Image adjustable projector stand

Assorted SDI 12g / HDMI / DVI and Cat-5 cables

Internet Wi-Fi:

Available on request

DISCLAIMER

Whilst every effort is made to fulfil hirer requirements from in-house stock; no guarantee is made that the equipment listed will be available for a particular event due to damage or circumstances beyond our control.

This document is correct at time of publishing, but it may not represent the full equipment stock list entirely as the venue upgrades its equipment from time to time in an effort to improve its capabilities or replace outmoded and malfunctioning equipment.